



HOUSE PARTY SOLUTIONS



# The Painswick

Cotswolds

SLEEPS 32-42



- ◆ Located within the historic and picture postcard village of Painswick, with great links to Stroud and Cheltenham
- ◆ Games room with Sky TV, pool table and board games
- ◆ Two treatment rooms with Elmis trained therapists available
- ◆ Old school record player - proper vinyl!
- ◆ Beautiful terrace overlooking the valley
- ◆ Dining for up to 75 guests
- ◆ 17 en-suite bedrooms
- ◆ Superb in house catering lead by a brilliant head chef from a fabulous London pedigree



HOUSE PARTY SOLUTIONS

## The Painswick



### OVERVIEW

Originally built in the late 18th century at the height of the wool trade, this previously-considered humble abode, was first known as Prospect House. After a number of different changes and purposes during its life, it was then purchased in 2015 and brought right into the 21st century, with the owners working to ensure this Palladian masterpiece shines in all its glory.

Exclusive use of this property is for groups of 40 - 60 guests, however dining for up to 75 can be catered for. With 17 beautiful bedrooms and a magnificent outdoor terrace perfect for basking in the glorious sunshine overlooking the Gloucestershire vales, the Painswick has everything you would need to make it your home from home!

### A note from the owners

Looking for somewhere to celebrate a big shindig or throw a surprise bash? Our picture-perfect house, nestled in the Cotswold hillside, is ready and waiting for you to take over and make your own. Whatever the occasion, you and the rest of the flock can get your glad rags, quaff some fizz and party the night away in our home from home.



HOUSE PARTY SOLUTIONS

## The Painswick

### YOUR STAY

#### Number accommodated

- ◆ Sleeping 34 guests across 17 beautiful bedrooms
- ◆ 6 of the bedrooms can include additional beds, 2 rooms with 2 additional beds and then 4 rooms with space for an additional single
- ◆ Maximum sleeping capacity of 42 guests however, cots can be provided for infants

#### Bedroom & bathroom configuration

- ◆ There are 10 bedrooms with the main house
- ◆ The further 7 bedrooms can be found within the Garden Wing
- ◆ All bedrooms are en-suite with monsoon showers and baths
- ◆ The bedrooms vary in size and character however all have Nespresso machines, DAB radio's and Sky TV

#### Dining & Catering

- ◆ Dining room offers space for up to 75 dining guests
- ◆ Seating for 30 alfresco
- ◆ Superb in house catering team available for all events and celebrations.
- ◆ Please enquire for sample menus and further information

#### Facilities

- ◆ In house catering and bar provided with staff to take care of all aspects of your stay
- ◆ Games snug with Sky TV, pool table and board games
- ◆ Outdoor terrace and gardens

#### Weddings

- ◆ Licensed for civil ceremonies with spaces available such as the 'good-looking lounge', outside on the terrace with the Painswick valley for company, or the restaurant which once upon a time, was a Sunday school
- ◆ If a more traditional ceremony is preferred - Located a short walk from the property along a very pretty footpath is the Painswick Church which sits amongst the shadows of 99 glorious yew trees
- ◆ Please enquire for further information, availability and pricing

#### Corporate

- ◆ The Painswick is a superb venue to escape the hustle & bustle for a more civilised meeting or away day, the property offers a wide range of packages for exclusive use takeovers or just a simple day delegate rate. Please find just an insight into a few options available below:
- ◆ Day delegate: 12 hour rates available, inclusive use of the meeting room, in house audio visual, Wi-Fi, 2x tea & coffee and munchie breaks and a 2 course lunch
- ◆ Sleepover delegate: 24 hour rate, as well as all of the above, overnight accommodation is provided within one of the sixteen bedrooms, a 3 course dinner and a full Cotswolds breakfast
- ◆ Please enquire for more information and pricing

#### Check in & out times

- ◆ Check in from 3pm
- ◆ Check out by 11am
- ◆ These times can be flexible

#### Disabled facilities

- ◆ Not suitable - sorry. The Painswick is listed and therefore no lifts or ground floor facilities

#### Pets

- ◆ Dogs are not allowed in the main house however, allowed within the Garden Wing rooms. For exclusive use bookings certain exceptions and restrictions can be discussed

#### Stag & Hen groups

- ◆ Sophisticated stag & hen groups welcome, please enquire

#### Other services offered

- ◆ 2x treatment rooms with trained therapists available
- ◆ Housekeeper
- ◆ Complimentary transfers to and from Stroud station
- ◆ Babysitters can be organised
- ◆ A list of local recommended pubs / restaurants can be provided
- ◆ Cocktail demonstrations



HOUSE PARTY SOLUTIONS

## The Painswick

### ACTIVITIES

#### On-site activities

- ◆ Games snug - Sky TV, pool table and board games
- ◆ Cocktail demonstrations

#### Local attractions

- ◆ Clay pigeon shooting and duck herding, only 20 minutes away
- ◆ Electric bikes to hire with trails and routes
- ◆ Organised visits to Highgrove/Westonbirt can be arranged
- ◆ Cheltenham - 25 minutes
- ◆ Rococo Gardens - 5 minutes
- ◆ Stroud Farmers Market
- ◆ Chavenage House
- ◆ Minchinhampton Common - great walks & pubs - 15 minutes
- ◆ Tetbury - 30 minutes





HOUSE PARTY SOLUTIONS

## The Painswick

### LOCATION

The gorgeous Palladian house sits snug in the petite village of Painswick. Hidden away in the hillside, down the village's narrow cobbled streets with the most stunning views of the Painswick Valley beyond.

### Distance from

- ◆ London - 2 hours 20 minutes / 110 miles
- ◆ Birstol - 50 minutes / 35 miles
- ◆ Cardiff - 1 hour 20 minutes / 60 miles
- ◆ Birmingham - 1 hour 20 minutes / 68 miles

### Nearest airport

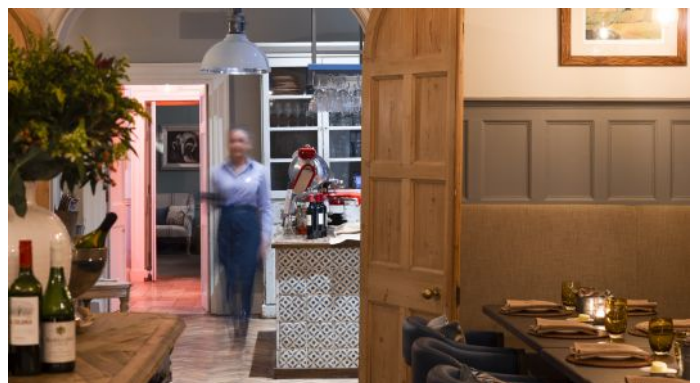
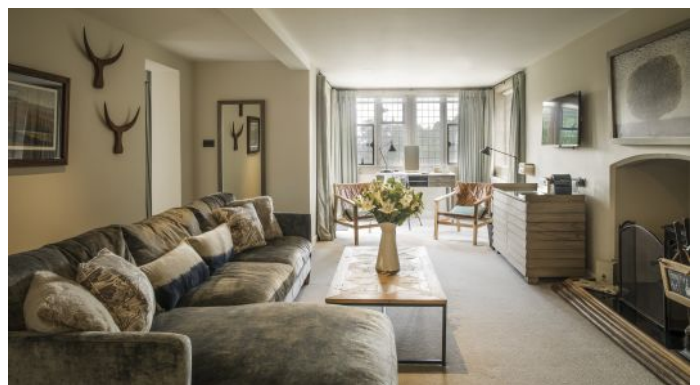
- ◆ Bristol Airport - 1 hour 5 minutes / 45 miles
- ◆ Local taxi service

### Nearest train station

- ◆ Stroud - 10 minutes / 4 miles
- ◆ Complimentary transfers to and from Stroud railway station

### Distance to village / town

- ◆ Located within the beautiful and picturesque village of Painswick
- ◆ Stroud - 10 minutes / 4 miles
- ◆ Cheltenham - 25 minutes / 10 miles





HOUSE PARTY SOLUTIONS

## The Painswick



### PRICES

2024

#### Weekend

- ◆ Friday, Saturday & Sunday (minimum 3 night stay): £18,000 - £33,000.
- ◆ Please enquire for bespoke and more accurate pricing based on your dates and exclusive use requirements

#### Midweek

- ◆ Midweek Exclusive Use (Monday-Thursday) from: £16,000
- ◆ Please enquire for bespoke and more accurate pricing based on your dates and exclusive use requirements

#### Weekly

- ◆ Please enquire

#### Christmas & New Year

- ◆ Christmas - please enquire for further details
- ◆ New Year - please enquire for further further

2025

#### Weekend

- ◆ Friday, Saturday & Sunday (minimum 3 night stay): £20,000 - £35,000.
- ◆ Please enquire for bespoke and more accurate pricing based on your dates and exclusive use requirements

#### Midweek

- ◆ Midweek Exclusive Use (Monday-Thursday) from: £18,000
- ◆ Please enquire for bespoke and more accurate pricing based on your dates and exclusive use requirements

#### Weekly

- ◆ Please enquire

#### Christmas & New Year

- ◆ Christmas - please enquire for further details
- ◆ New Year - please enquire for further further



HOUSE PARTY SOLUTIONS

## The Painswick

### Weddings

- ◆ Pricing roughly advertised at £18,000 - £26,000 however tailored to your wants and needs, the time of year is also a key element
- ◆ Bespoke package which includes all rooms, venue hire, drinks reception, canapes, 3 course meal with coffee and Pettit Fours, the toast, wine, water and evening snacks/buffet
- ◆ Catering: guests can pre-order different options and will have a complimentary tasting before the event

### Corporate

- ◆ Day delegate rates from £85 per person
- ◆ Sleepover delegate (24hr) from £399 per person
- ◆ Both inclusive of VAT

### Booking terms

- ◆ Deposit - an initial 30% of the booking value is required to secure the dates along with a returned signed copy of the T&C's
- ◆ Balance - depending on the length of time between booking and arrival, a staged payment scheme will be in place
- ◆ Damages deposit - generally 30% of the booking value



HOUSE PARTY SOLUTIONS

## The Painswick

