



HOUSE PARTY SOLUTIONS



The Essex Mansion & Spa

Essex

SLEEPS 18 + 8



- ◆ Main house sleeps 18 guests
- ◆ Self-contained barn sleeps 8 guests
- ◆ Luxurious interiors and exteriors
- ◆ 9,000 ft square, heated indoor swimming pool
- ◆ Hot tub
- ◆ Steam room
- ◆ Bar and games room with pool table & darts board
- ◆ Cinema room with electric reclining chairs
- ◆ 4 acres of beautiful landscaped gardens, terrace with seating and outdoor hot tub
- ◆ Smart TV's or Projectors in all bedrooms with Sky TV, Netflix & Amazon Prime



HOUSE PARTY SOLUTIONS

The Essex Mansion & Spa



OVERVIEW

The Essex Mansion & Spa in Chigwell presents an exquisite blend of timeless elegance and modern luxury. Set amidst sprawling grounds adorned with lush greenery and vibrant blooms, the mansion stands as a beacon of sophistication. Its majestic facade exudes grandeur, inviting guests into a world of opulence and refinement.

Inside, the mansion boasts meticulously designed interiors, adorned with sumptuous furnishings, intricate decor, and upscale amenities. Each room exudes its own unique charm, offering a sanctuary of comfort and tranquility. Whether relaxing in the cosy lounge areas, indulging in gourmet dining experiences, or unwinding in the luxurious spa facilities, guests are enveloped in a sense of serenity and indulgence.

Outside, the grounds of The Essex Mansion & Spa provide a picturesque backdrop for strolls and moments of contemplation. The manicured gardens offer a serene oasis, with tranquil pathways winding through vibrant flora and tranquil water features. Guests can also enjoy outdoor recreational activities, such as tennis or croquet, amidst the natural beauty of the estate.

In every aspect, The Essex Mansion & Spa epitomizes luxury and relaxation, offering a haven of indulgence and rejuvenation amidst the idyllic surroundings of the Essex countryside.



HOUSE PARTY SOLUTIONS

The Essex Mansion & Spa

YOUR STAY

Accommodation

With accommodation for up to 18 guests within the main house and an additional self-contained barn that comfortably sleeps a further 8 guests, The Essex Mansion & Spa caters to larger gatherings with ease. Every detail, from the lavish furnishings to the state-of-the-art spa facilities, have been meticulously crafted to ensure an unforgettable stay.

Number accommodated

- ◆ Main house: sleeps 18
- ◆ Self-contained barn house: sleeps 8
- ◆ Additional day guests are permitted at an additional cost

Main House: Bedroom & bathroom configuration

Ground Floor

- ◆ Bedroom 7: Double sofa bed with a W/C and fan - sleeps 2

First Floor

- ◆ Bedroom 1: Super King bed with en-suite bathroom and air conditioning - sleeps 2
- ◆ Bedroom 2: King size bed with en-suite bathroom and air conditioning - sleeps 2
- ◆ Bedroom 3: King size bed with en-suite bathroom and air conditioning - sleeps 2
- ◆ Bedroom 4: King size bed with en-suite bathroom and air conditioning - sleeps 2

Second Floor

- ◆ Bedroom 5: Zip & Link Super King / Twin bed plus a King size bed with Jack & Jill en-suite bathroom (shared with Bedroom 6) and fan - sleeps 4
- ◆ Bedroom 6: Double bed and two single beds with Jack & Jill en-suite bathroom (shared with Bedroom 5) and fan - sleeps 4

Self-Contained Barn House: Bedroom & bathroom configuration

Ground Floor

- ◆ Bedroom 1: King size bed with shared bathroom - sleeps 2
- ◆ Bedroom: King size bed with shared bathroom - sleeps 2
- ◆ Bedroom: Double bed with shared bathroom - sleeps 2
- ◆ Lounge: Double sofa bed with shared bathroom - sleeps 2
- ◆ Charged in addition to the main house, at £500 per night

Cooking & Dining

- ◆ Dining table seats 18 guests
- ◆ Al fresco dining on terrace seats 18 guests
- ◆ 3 ovens
- ◆ 5 induction hobs
- ◆ 2 dishwashers
- ◆ Fridge plus coolers
- ◆ Microwave
- ◆ Toaster
- ◆ Kettle
- ◆ Tassimo coffee machine with pods included
- ◆ Ice machine
- ◆ Coal BBQ with 1 bag of fuel provided

Catering

- ◆ Self catered
- ◆ Approved caterers can be recommended

Facilities

- ◆ House-keeping (additional cost)
- ◆ Linen & towels provided
- ◆ Tea & coffee supplies provided (including Nespresso coffee machine with pods)
- ◆ Washing machine & tumble dryer
- ◆ Hairdryers
- ◆ Towels for pool
- ◆ Children welcome - 1 travel cot & 1 x high chair available on request
- ◆ Parking available for up to 12 cars
- ◆ Heated swimming pool
- ◆ Hot tubs
- ◆ Steam room
- ◆ Cinema room
- ◆ Games room & Bar

Disability facilities

- ◆ Ground floor bedroom available
- ◆ Ground floor W/C
- ◆ Please note, there are 3 steps to get into the property



HOUSE PARTY SOLUTIONS

The Essex Mansion & Spa

YOUR STAY (cont.)

Check-in and out times

- ◆ Check-in from: 4:00 pm
- ◆ Check out at: 11:00 am

Pets

- ◆ Dogs welcome at a cost of £50 per dog

Weddings

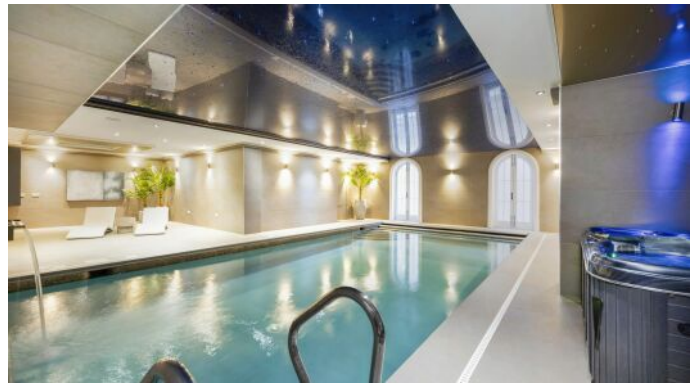
- ◆ Unfortunately The Essex Mansion & Spa is not currently licensed to hold ceremonies
- ◆ Wedding events and parties are possible
- ◆ Additional day guests permitted by prior agreement only - charges apply

Stag & Hen groups

- ◆ Hen parties considered on request
- ◆ Stag parties considered on request

House rules

- ◆ No fireworks
- ◆ No smoking in the house
- ◆ Additional day guests permitted by prior arrangement - charges apply





HOUSE PARTY SOLUTIONS

The Essex Mansion & Spa

ACTIVITIES

On-site activities

- ◆ Heated swimming pool
- ◆ Hot tub jacuzzi
- ◆ Steam room
- ◆ Smart TV or projectors in each bedroom
- ◆ Cinema room
- ◆ Bar/games room featuring a pool table and dart board
- ◆ Gym
- ◆ Coal BBQ
- ◆ 4 acres of private landscaped gardens with terrace and outdoor hot tub

Local activities

- ◆ Thames Chase Forest Centre: Immerse yourself in nature where winding trails offer opportunities for hiking, cycling, and wildlife spotting amidst ancient woodlands and picturesque lakes.
- ◆ Partyman World of Play Upminster: Perfect for families, Partyman World of Play Upminster offers an indoor playground with slides, ball pits, and interactive activities, ensuring hours of fun and entertainment for children of all ages.
- ◆ Stubbers Adventure Centre: Thrill-seekers can satisfy their adventurous spirit where a wide range of outdoor activities such as kayaking, rock climbing, and high rope courses await amidst stunning countryside surroundings.
- ◆ Upminster Park: Escape the hustle and bustle of city life and unwind in the serene setting, boasting expansive green spaces, tranquil ponds, and beautiful flower gardens, ideal for picnics, leisurely walks, or simply enjoying the fresh air.
- ◆ Upminster Tithe Barn Museum of Nostalgia
- ◆ Clockhouse Gardens
- ◆ Delta Force Paintball
- ◆ Cely Woods: Nature enthusiasts can explore the enchanting woods, a hidden gem offering peaceful woodland trails, diverse flora and fauna, and the opportunity to connect with nature.

The house is just an hour's drive away from central London where you can explore the likes of Piccadilly Circus, Royal Parade Beauty Spa, Leicester Square, The British Museum, and London Zoo to name just a few!





HOUSE PARTY SOLUTIONS

The Essex Mansion & Spa

LOCATION

Essex Mansion & Spa is situated amidst the serene countryside of Chigwell, offering a secluded retreat just a short distance from the bustling city of London.

Nearest airports

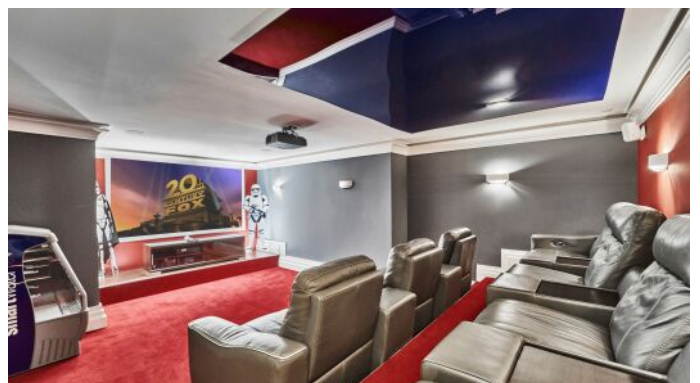
- ◆ London City - 35 minutes / 20.7 miles
- ◆ Stanstead - 40 minutes / 23.5 miles
- ◆ Gatwick - 1 hour / 50 miles
- ◆ Heathrow - 1 hour & 5 minutes / 52 miles

Nearest train station

- ◆ Romford Railway Station - 15 minute drive / 5 miles

Distance to village/town

- ◆ Stapleford Abbots - 5 minutes / 2 miles
- ◆ Romford - 15 minutes / 4.6 miles
- ◆ Chigwell - 15 minutes / 6.3 miles





HOUSE PARTY SOLUTIONS

The Essex Mansion & Spa



PRICES

2024 2025

- ◆ Minimum stay of 3 nights, applies to all weekends bookings. The only exception is for bookings made within 90 days of arrival - please contact us to discuss.
- ◆ Minimum stay of 2 nights applies to midweek bookings, between Sunday & Thursday
- ◆ Please note, that a cleaning fee of £300 per booking, will be added to the prices listed below:

Weekends - minimum 3 night stay

- ◆ 3 nights: From £6,347 - £8,312 - based on up to 18 guests
- ◆ Barn charged at an additional £500 per night, sleeping a further 8 guests

Mid-Week - minimum 2 night stay

- ◆ 2 nights: From £2,953 - £5,178
- ◆ 3 nights: From £4,554, - £4,854
- ◆ 4 nights: From £6,279 - £11,211
- ◆ Prices above are based on up to 18 guests
- ◆ Barn charged at an additional £500 per night - sleeping a further 8 guests

Weekly

- ◆ From: £11,332 - £18,573
- ◆ Prices based on up to 18 guests
- ◆ A discount of 10% applies on 7 night bookings

Self contained Barn

- ◆ Charged at an additional £500 per night

Christmas / New Year

- ◆ Please enquire regarding availability and rates

Booking Terms

- ◆ 50% deposit payable to secure booking
- ◆ Balance due 30 days prior to arrival
- ◆ £1,500 security deposit required prior to arrival
- ◆ Terms above can vary for larger events, celebrations and Film or Photo shoots
- ◆ Event rates for up to 50 people, available on request



HOUSE PARTY SOLUTIONS

The Essex Mansion & Spa

