



HOUSE PARTY SOLUTIONS



Pentire Penthouse

Cornwall

SLEEPS 8-10



- ◆ Unique wrap around balcony offering 360 degree views of the beautiful Cornish coastline
- ◆ Overlooking the famous Fistral Beach
- ◆ Rooftop Hot Tub
- ◆ 4 beautifully appointed bedrooms with breathtaking views
- ◆ Contemporary open plan living area
- ◆ A truly modern and sophisticated Cornish coastal escape





HOUSE PARTY SOLUTIONS

Pentire Penthouse



OVERVIEW

Pentire Penthouse is an elegant and sophisticated cool white duplex penthouse stuffed with quirky artwork and midcentury furniture. It has 4 deluxe ensuite bedrooms off the entrance hall (which has access from the road and underground carpark via a lift). From the atmospheric entrance hall a dramatic glass staircase leads you up into the astonishing circular living space which is encircled with glass to take in the mesmerising sea views all round. Here you'll find a modern, fully equipped kitchen, dining and sumptuous sitting area. Walk out of the French windows to find a huge terrace with sitting area and 8 person hot tub overlooking the wide golden sands of Fistral Beach.

You are ideally located to enjoy all that Cornwall has to offer from surfing the brilliant regular waves of Fistral Beach to some of the UK's most dramatic coastal walks right on your doorstep.

There are plenty of places to eat and drink in easy walking distance: try [Lewinnicks](#), the [Fernpit Cafe](#) for a fresh lobster and even [Rick Stein's](#) brilliant Takeaway for the obligatory fish & chips!

Slightly further afield you have access to the internationally acclaimed: Eden Project 35 mins drive. Minack theatre 1hr 15 mins drive. Tate St Ives 1hr drive. To name but a few



HOUSE PARTY SOLUTIONS

Pentire Penthouse

YOUR STAY

Number accommodated

- ◆ Sleeps 8-10

Number of Bedrooms

- ◆ 4

Number of bathrooms

- ◆ 4

Bedroom & bathroom configuration

- ◆ Crantock - Enormous master bedroom suite with private balcony. 1x Super King zip & link bed, en-suite bathroom with bath and separate shower. Double sofa seating area with TV. There is an additional single bed-in-a-box which can be made up on request for an extra charge.
- ◆ Fistril - The second master suite with private balcony. 1x Super King zip & link bed with en-suite shower room. The refurbished mid-century sofa bed can be prepared for an extra charge.
- ◆ Gannel - Smaller, but still with plenty of room and a great view of the sea from your bed. 1x Super King zip & link bed with en-suite shower room
- ◆ Poly Joke - Our most cosy room. 1x Super King zip & link bed, the bathroom located next door with shower over bath.
- ◆ All bedrooms are supplied with Amphora Aromatics x Tregulland & Co complimentary Rosemary, Sage & Burdock bath products and 400 thread count Egyptian cotton linen

Dining

- ◆ Seating for 10 around the dining table

Catering

- ◆ Hired on a self-catered basis however, recommended caterers can be provided

Facilities

- ◆ 8 man rooftop Hot Tub
- ◆ Board games
- ◆ Kitchen equipment for 12 guests
- ◆ Dishwasher
- ◆ 36" TV
- ◆ Retro boom box with Ipod connectivity
- ◆ Large roof top terrace

Check in / out times

- ◆ Check in - 4pm
- ◆ Check out - 10am or 4pm on Sundays

Pets

- ◆ Not suitable for pets

Disabled facilities

- ◆ Not suitable for those with limited mobility

Stag & Hen

- ◆ Not suitable for Stag & Hen groups



HOUSE PARTY SOLUTIONS

Pentire Penthouse

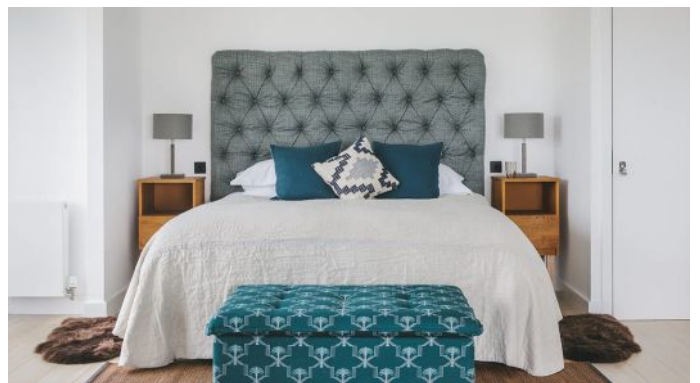
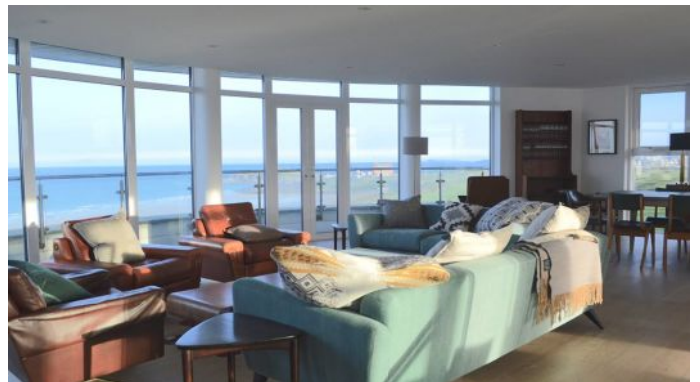
ACTIVITIES

On-site Activities

- ◆ 8 person rooftop Hot Tub
- ◆ The enormous 120m2 sun terrace
- ◆ Board games

Local activities

- ◆ Fistril beach for swimming, sun bathing, surfing and many more
- ◆ The Eden Project - 35 minutes / 22 miles
- ◆ The beautiful town of St Ives - 45 minutes / 32 miles
- ◆ Visit Lands End - 1 hour 5 minutes / 42 miles
- ◆ Cycle The Camel Trail - 30 minutes / 18 miles





HOUSE PARTY SOLUTIONS

Pentire Penthouse

LOCATION

Overlooking the famous Fistral Beach, this grand Penthouse property is superbly located for exploring Cornwall, investigating the shops and night life of Newquay or simply escaping into your own coastal fantasy.

Distance From

- ◆ London - 4 hours 45 minutes / 280 miles
- ◆ Bristol - 2 hours 50 minutes / 163 miles
- ◆ Exeter - 1 hour 30 minutes / 80 miles
- ◆ Manchester - 5 hours 30 minutes / 323 miles

Nearest Airport

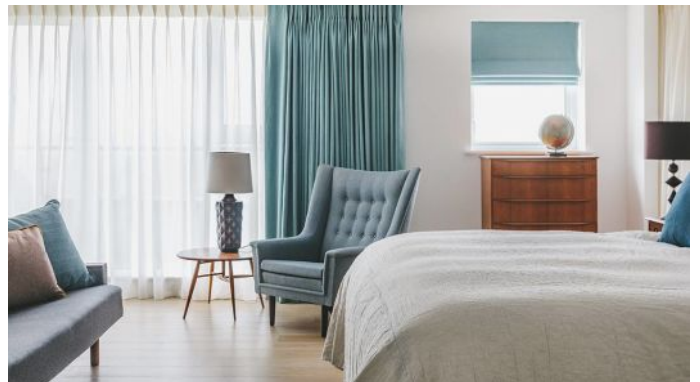
- ◆ Newquay - 20 minutes / 7 miles
- ◆ Newquay to London Gatwick in just over 1 hour!

Nearest Train Station

- ◆ Newquay - 6 minutes / 1 mile

Distance to Town / Village

- ◆ Newquay - 5 minute walk from the Penthouse

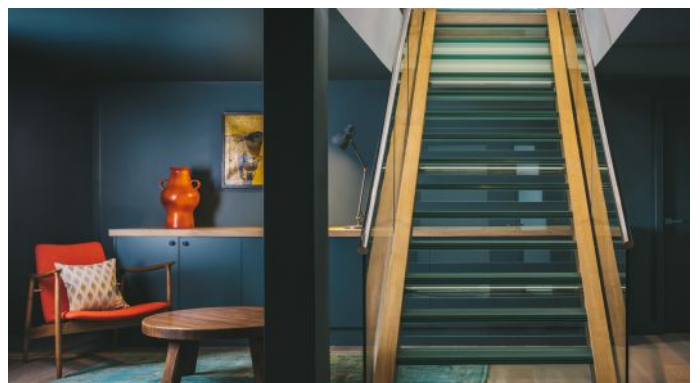
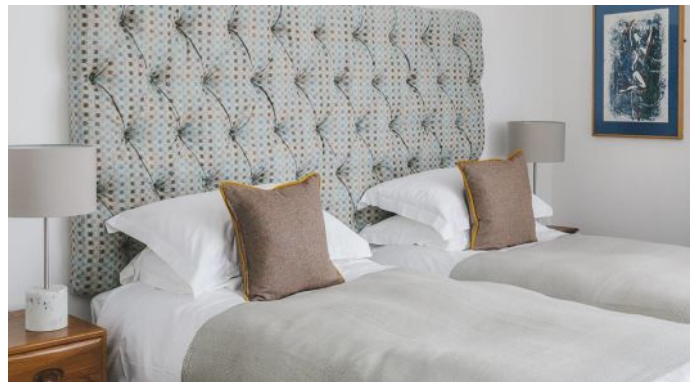




HOUSE PARTY SOLUTIONS

Pentire Penthouse

FLOOR PLAN





HOUSE PARTY SOLUTIONS

Pentire Penthouse



PRICES

2024 / 2025 Prices are based on 8 sleeping guests, extra beds to sleep 10 guests are priced at £110 per bed for short breaks or £175 per bed for week long stays.

Weekends

- ◆ Weekends charged and based on a 3 night minimum stay. This allows guests the flexibility of a more leisurely check out on the Sunday if the third night isn't required
- ◆ 3 nights charged from £1,560 - £2,490
- ◆ Please enquire for an accurate quotation based on the desired time of year

Midweek

- ◆ Priced from £1,300 - £2,075

Weekly

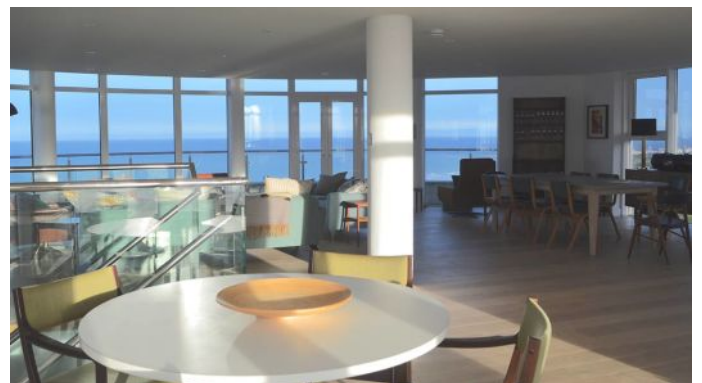
- ◆ Priced from £2,600 - £4,900
- ◆ Please enquire for an accurate quotation based on the desired time of year

Christmas & New Year

- ◆ Christmas - £4,900
- ◆ New Year - £4,900
- ◆ Both are based on a minimum 7 night stay

Booking Terms

- ◆ A 33% deposit will be required to secure the booking
- ◆ The remaining balance is due 3 months prior to arrival alongside the damages deposit
- ◆ Damages deposit of £500





HOUSE PARTY SOLUTIONS

Pentire Penthouse

