



HOUSE PARTY SOLUTIONS



Cornwall Castle

Cornwall

SLEEPS 22



- ◆ Set within a private estate on the Cornwall & Devon border
- ◆ Built in 1698, Cornwall Castle is an impressive country house set in Repton designed woodland gardens on the Cornish bank of the River Tamar
- ◆ Guests can keep entertained in the games room, enjoy a dip in the solar heated swimming pool or explore the 55-acres of woodland gardens
- ◆ Exclusive use of all 11 individually styled bedrooms with spectacular views, accommodating up to 22 guests
- ◆ Lovingly renovated to mix the glory of a bygone age with 21st-century luxury. Heavy curtains spool into deep carpets, chandeliers twinkle, family portraits gaze down on dining for dozens



HOUSE PARTY SOLUTIONS

Cornwall Castle



OVERVIEW

The secluded and private nature of the estate and the direct access to the River Tamar combine to make Cornwall Castle the destination of choice. Creating the homely atmosphere, guests have the exclusive use of the Castle and its AGA kitchen to cook their evening meals, hearty breakfasts and lunches. Spend lazy summertime days relaxing by the outdoor solar heated swimming pool with a good read and to see in the winter nights, guests can enjoy after dinner games and laughter by the large open fire in the Drawing Room. For the little kids (and big kids) there is a dedicated games room in the cellar with a widescreen smart TV, billiards, table tennis and a darts board.

Guests are welcomed to borrow a pair of wellies from the Castle Boot Room to explore the 55-acres of woodland gardens. There are many spectacular walks around the Estate, including paths through the Lime Avenue and American Gardens, to Sir James Tillie's mysterious mausoleum and down to the river quay to the picturesque Bathing Hut. Hiring the castle exclusively ensures that you will be the only guests at the castle during your stay.

A note from the owners

We invite you to enjoy exclusive use of all 11 beautifully styled bedrooms with spectacular views, accommodating up to 22 guests. We also have a large dining room, modern farmhouse style kitchen and two wonderfully welcoming reception rooms. Guests can keep entertained in our games room, enjoy a dip in our solar heated outdoor swimming pool or explore the 55-acres of woodland gardens, all of which is set within a private estate on the Cornwall & Devon border.



HOUSE PARTY SOLUTIONS

Cornwall Castle

YOUR STAY

Number accommodated

- ◆ Sleeping 22 guests across 11 beautifully styled bedrooms with spectacular views

Bedroom & bathroom configuration

- ◆ 11 bedrooms, 9 en-suite, 2 with shared bathrooms
- ◆ 1x four-poster Super King
- ◆ 1x Super King
- ◆ 7x bedrooms can be set up as Super King or twin
- ◆ 8 rooms located on the first floor with stunning views of the River Tamar across to Devon or of the historic Castle gardens
- ◆ 1 room is located on the ground floor, with a wet room facility, to enable disabled friendly access
- ◆ 2 rooms in the Castellated turrets sharing a bathroom
- ◆ Ground floor toilets, ladies, gents, disabled (with baby changing table)
- ◆ 1 ground floor room with wet room en-suite toilet and shower

Dining capacity

- ◆ Kitchen table seating 8
- ◆ Dining room - can seat up to 50 on rounds / trestle. Or 22 on a large mahogany table
- ◆ Alfresco - seating for 36 across 6 separate round tables

Catering

- ◆ Hired on a self catered basis however, local recommended caterers can be provided

Facilities

- ◆ Solar heated outdoor swimming pool (heated additionally if the sun isn't shining)
- ◆ Games room with smart TV, billiards table, ping pong table, football table and other board games
- ◆ Lawn games - giant jenga, croquet and giant connect 4
- ◆ River with option for activities to be arranged - wild swimming, river cruise, SUP etc. Additional charge may be applicable

Wedding

- ◆ An impressive Cornish country castle situated on a private family estate available to exclusively hire for your wedding celebrations. Whether you stay for the weekend or the whole week, you are set to have a wedding like no other
- ◆ Civil ceremony license
- ◆ Recommended catering suppliers can be recommended. Couples welcome to arrange their own caterers - must have relevant food safety and hygiene certificates
- ◆ Please enquire for further information

Check in/out times

- ◆ Check in from 5pm
- ◆ Check out by 10am

Pets

- ◆ Guests are welcome to bring their dogs with them. There are three dog friendly bedrooms, or there is the 'boot room' which is at the far end of the Castle on the ground floor.
- ◆ Dogs are welcome within the reception rooms... although not on the sofa's and to walk around the grounds on a lead.
- ◆ The owners do ask that dogs don't go into the other bedrooms or into the dining room to ensure there are kept as hypo-allergenically clean as possible.
- ◆ A maximum of four dogs for any booking, charged at £15 per dog per night

Disabled facilities

- ◆ Ground floor bedroom has been adapted for guests with limited mobility, offering a wet room style en-suite. Further to this, the whole ground floor can be accessed in a wheelchair and the upper terrace can also be reached

Stag & Hen groups

- ◆ Both groups welcome, please enquire



HOUSE PARTY SOLUTIONS

Cornwall Castle

ACTIVITIES

On-site activities

- ◆ Swimming pool
- ◆ Games room - Smart TV, Billiards table, ping pong table, football table and other board games
- ◆ Lawn games - Giant jenga, croquet and giant connect 4
- ◆ Clay pigeon, pheasant shooting, 4X4 track, archery, treasure hunt, wine tasting, SUP, boat trips, foraging. Additional charge may be applicable

Nearby & location activities

- ◆ Beaches
- ◆ Fishing
- ◆ Tree Surfing
- ◆ Canoeing / kayaking
- ◆ Cycle paths
- ◆ Horse riding
- ◆ Golf
- ◆ Spa
- ◆ Gardens
- ◆ Dartmoor & Bodmin National parks

Places to visit

- ◆ Beeches & surf schools: There are a number of beeches nearby, the closest being Whitsand Bay, a 30 min drive offering miles of coastline and the Adventure Bay surf school.
- ◆ Plymouth Hoe & Barbican: A mix of shops, historic sites and restaurants, the Hoe and the Barbican is a 30 min drive and home to the Plymouth Gin Distillery, offering tours and a restaurant.
- ◆ Plymouth's Royal William Yard: The Grade 1 former Royal Naval victualling buildings are filled with cafes, bars, restaurants located on the waterfront
- ◆ National Trust: There are a number of National Trust locations nearby.
- ◆ Fishing Villages
- ◆ Wet Weather Activities: Explore The Eden Project in ST Austell and its huge domes of Tropical, and Mediterranean plant life. Plymouth Aquarium on the Barbican, home to Europe's deepest shark tank.





HOUSE PARTY SOLUTIONS

Cornwall Castle

LOCATION

In the heart of the Tamar Valley, an area of outstanding natural beauty, the Castle is set within a private Estate, on the surrounding banks of the River Tamar. Ideally situated on the borders of Cornwall & Devon, Cornwall Castle is a perfect country venue to use as a base to explore the very best of the West country. Sandy beaches, Dartmoor National Park, Eden Project and quintessential Cornish villages are all within a short drive.

Distance from

- ◆ London - 4 hours / 223 miles
- ◆ Bristol - 2 hours 25 minutes / 130 miles
- ◆ Exeter - 1 hour / 52 miles
- ◆ Plymouth - 25 minutes / 10 miles

Nearest airport

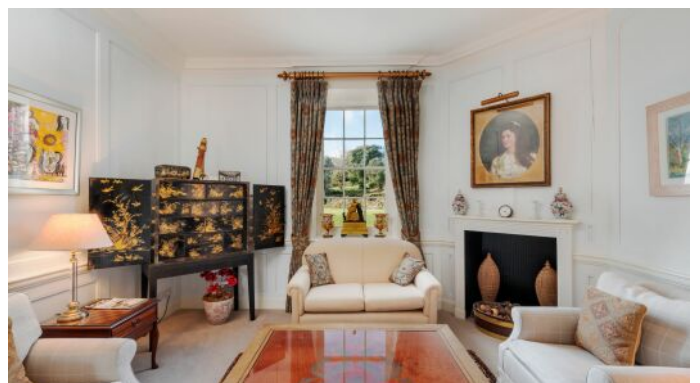
- ◆ Exeter airport - 1 hour 5 minutes / 55 miles
- ◆ Newquay airport - 55 minutes / 40 miles

Nearest train station

- ◆ Cornwall - 10 minutes / 5 miles
- ◆ Plymouth - 25 minutes / 11 miles

Distance to village / town

- ◆ Saltash - 15 minutes
- ◆ Plymouth - 30 minutes





HOUSE PARTY SOLUTIONS

Cornwall Castle



PRICES

We are delighted to offer our clients a rolling 10% last minute discount on all rates for any booking taken within 30 days of check-in!

Throughout the summer holidays, a minimum of 7 nights is required. A minimum of 2 nights is required for the remainder of the year unless otherwise specified. A 1-night stay may be available at short notice.

Check-in/out days are on Thursday, Friday, Sunday, or Monday. All stays begin at 5 pm and finish at 10 am on the day of departure.

- ◆ Weekend: £4,995 for 2 nights, £7,270 for 3 nights
- ◆ Midweek: £4,555 for 2 nights, £6,835 for 3 nights
- ◆ Weekly: £14,930

- ◆ Weekend: £4,590 for 2 nights, £6,665 for 3 nights
- ◆ Midweek: £4,150 for 2 nights, £6,225 for 3 nights
- ◆ Weekly: £13,635

April 2025

- ◆ Weekend: £5,430 for 2 nights, £7,925 for 3 nights
- ◆ Midweek: £4,995 for 2 nights, £7,490 for 3 nights
- ◆ Weekly: £16,325
- ◆ Minimum 3 night stay applies over the Easter weekend

May 2025

- ◆ Weekend: £5,865 for 2 nights, £8,580 for 3 nights
- ◆ Midweek: £5,430 for 2 nights, £8,145 for 3 nights
- ◆ Weekly: £17,725
- ◆ Minimum 3 night stay applies over the bank holiday weekends

June, July & Aug 2025

- ◆ Weekend: £6,305 for 2 nights, £9,235 for 3 nights
- ◆ Midweek: £5,865 for 2 nights, £8,800 for 3 nights
- ◆ Weekly: £19,125
- ◆ A minimum 7 night stay applies over the peak summer holiday weeks

September & October 2025

- ◆ Weekend: £5,865 for 2 nights or £8,580 for 3 nights
- ◆ Midweek: £5,430 for 2 nights, £8,145 for 3 nights
- ◆ Weekly: £17,725

◆ Christmas - Not Available

- ◆ New Year: - minimum 3 night stay: £8,145

- ◆ Please enquire for 2025 / 2026 rates and minimum stay requirements

- ◆ An initial 25% is required to secure any booking
- ◆ The remaining balance is required 3 months prior to arrival
- ◆ Refundable damages deposit £1,000



HOUSE PARTY SOLUTIONS

Cornwall Castle

