



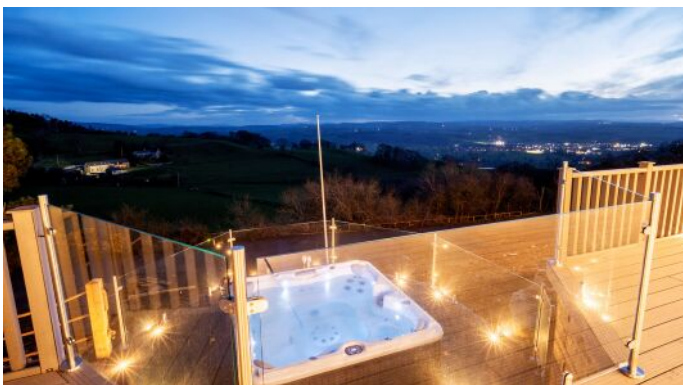
HOUSE PARTY SOLUTIONS



Clwydian Hill Manor

North Wales

SLEEPS 30



- ◆ Clwydian Hill Manor, an exquisitely-presented 11 bedroom property with sleeping facilities for up to 30 guests
- ◆ A Magnificent 6*Star Property. Perfect for a Holiday or Corporate Breakaway
- ◆ Excellent amenities & entertainment facilities: 46 sq. m heated swimming pool, Separate heated kiddie's pool, Entertainment Room, Magnificent Cave bar, Hot tub, Sauna, Fire Pit & Outdoor BBQ
- ◆ Set in its own 1.5 acres of private land & located within the heart of the stunning Denbighshire countryside, with 50 miles of uninterrupted panoramic views over this impressive Area of Outstanding Natural Beauty (AONB)
- ◆ Magnificent ground floor Spa area, guests are instantly welcomed by the warmth and calm of this stunning temperature-controlled environment. Three separate patio doors open directly onto the decked veranda and incredible panoramic views.



HOUSE PARTY SOLUTIONS

Clwydian Hill Manor



OVERVIEW

Welcome to Clwydian Hill Manor, a magnificent 6* property!

Clwydian Hill Manor is an exquisitely-presented 11 bedroom property with sleeping facilities for up to 30 guests. Ideal for families, large groups of friends, hen & stag parties, celebratory events, or even a corporate breakaway. Clwydian Gate Manor boasts elegance, superb accommodation, and excellent amenities and entertainment facilities: Heated indoor pool, children's pool, sauna, hot tub, cave bar, games room, barbecue, fire pit, beautiful grounds, and excellent parking facilities.

Occupying an elevated position in the heart of the stunning Denbighshire countryside, with 50 miles of uninterrupted panoramic views of the rolling hills and breath-taking Clwydian Range, this magnificent exclusive property offers unparalleled 6*star holiday accommodation in an impressive and renowned Area of Outstanding Natural Beauty (AONB). Set in its own 1.5 acres of private land, with parking for up to 20 vehicles, and not overlooked by any other properties, this beautifully designed countryside house delivers an elegant and ideal space in which to party or relax and unwind. Its spacious grounds provide a child-friendly setting in which young children can safely play and run around, and it is the perfect place to enjoy a luxurious break in this beautiful part of North Wales.

With the input and expertise of highly skilled, award-winning architects and interior designers, no stone has been left unturned, nor corners cut, to ensure that the highest standards of excellence and luxury are achieved within all areas of this incredible property.



HOUSE PARTY SOLUTIONS

Clwydian Hill Manor

YOUR STAY

Number accommodated

- ◆ Comfortably sleeping a total of 30 guests, this impressive property comprises 11 bedrooms, four with en-suite bathrooms, and all situated on the ground floor.
- ◆ Each bedroom has its own elegant furnishing theme, with the majority having a patio door leading directly to the incredible outdoor space. Stretching alongside the entire length of the property, a 300 sq. metre decked veranda enables guests to enjoy incredible panoramic views from each of the bedrooms. All bedrooms have a 43 inch Smart TV.

Bedroom & bathroom configuration

- ◆ Bedroom 1 - 2x single beds (can be joined to become 1x super king double), with ensuite
- ◆ Bedroom 2 - 1x King bed + 4ft 6in pull out sofa bed
- ◆ Bedroom 3 - 2x single beds (can be joined to become 1x super king double)
- ◆ Bedroom 4 - 2x single beds (can be joined to become 1x super king double)
- ◆ Bedroom 5 - 4x single beds (can be joined to become 2x super king doubles)
- ◆ Bedroom 6 - 2x single beds (can be joined to become 1x super king double) + 4ft 6in pull out sofa bed
- ◆ Bedroom 7 (Celebration Suite) - 1x Super King 4 poster bed, with ensuite. Additional bath in room
- ◆ Bedroom 8 - 1x King bed + 4ft 6in pull out sofa bed
- ◆ Bedroom 9 - 1x King 4 poster bed
- ◆ Bedroom 10 - 1x King bed, with ensuite
- ◆ Bedroom 11 - 2x single beds (can be joined to become 1x super king double), with ensuite

Dining capacity

- ◆ The stunning dining room offers seating for up to 30 people at an extensive and elegant dining table with extremely comfortable chairs. Its tasteful decoration and stylish furnishings present an opulent environment in which to enjoy a celebratory meal or a casual supper, and its 65 inch Smart TV can also provide the perfect room in which to hold a conference or business meeting. The mainstay of this room is comfort, style and functionality.

Catering

- ◆ Hired on a self-catered basis however, local recommended caterers can be provided

Facilities

- ◆ Lounge - After a leisurely meal or, indeed, an intense business meeting, guests can relax in the large beautifully furnished lounge which adjoins the stunning dining room. A modern chalet-style room with wood panelled ceiling, it has a cosy log-burner fireplace, separate seating areas including a large corner couch, a 55 inch Smart TV, and several patio doors which open out onto a fabulous balcony, enclosed by glass balustrades. This is a delightful and stylish environment from which to take in the spectacular, far-reaching countryside views.
- ◆ State-of-the-art kitchen - A fantastic, fully equipped, state-of-the-art heat-in kitchen is also located on the first floor. Leading directly off the main dining room, guests can enjoy a quick coffee and snack, or indeed, test their culinary skills within this spacious high-spec kitchen. Its central island and great worktop space, together with numerous drawers, cupboards, appliances, cutlery and crockery, and general kitchenware, offer the beginnings of a culinary masterpiece!
- ◆ Entertainment Room - Entertainment scores highly at Clwydian Gate Manor, especially in the spectacular entertainment room which extends across the entire length of the second floor. On entering this splendid space, guests will immediately be bowled over by its stunning Bohemian crystal chandelier and magnificent floor to ceiling window, providing breath-taking panoramic views of the rolling hills and valleys. Within this fabulous fully air-conditioned room, with bar, fridge, lounge area with couches, massive 75 inch Smart TV, pool table, board games and table football, there's definitely something for everyone to enjoy.
- ◆ Magnificent Cave bar - Transport yourself back in time to our Medieval style sandstone Cave Bar & enjoy a relaxed drink or a more sparkling evening in the ambience of this fun quirky space. With its glowing electric fireplace, oak wood bar, a fridge set into the stonework, table and chairs, chandelier, lanterns, and illuminated barrels, the Cave Bar is an atmosphere that will definitely take you into your own zone!
- ◆ Hot tub - Built out onto the hillside, a fabulous hot tub with surrounding glass balustrades, enjoys amazing panoramic views of the idyllic Clwyd valley and Denbighshire countryside.
- ◆ Heated swimming pool - The 46 sq. metre heated swimming pool is perfect for a serious daily swim or just a quick dip. If aqua aerobics is more your thing, or you simply want to take things up a beat or two, then our excellent Bluetooth surround sound system can certainly meet your requirements. A fast-flowing overhead fountain also adds to the fun and enjoyment of this stunning pool.
- ◆ Separate heated kiddie's pool - Family time is paramount to the wonderful holiday experience on offer at Clwydian Gate Manor. Whether enjoying adult time in the large heated swimming pool, or simply unwinding on the nearby loungers, mums and dads can relax in the knowledge that their children are close by and having fun in the adjacent heated kiddies' pool.



HOUSE PARTY SOLUTIONS

Clwydian Hill Manor

YOUR STAY (cont.)

Corporate

- ◆ Clwydian Gate Manor also offers a unique opportunity for Companies to host a corporate breakaway, conference or business meeting at this outstanding property.
- ◆ Facilities include seating for up to 30 people, Wi-Fi throughout, a 65 inch Smart TV/display screen to specifically facilitate virtual conference meetings, and of course, superb accommodation and amenities.
- ◆ Set in an easy to access location, surrounded by incredible panoramic countryside views, Clwydian Gate Manor can create the essence of business and leisure all rolled into one.

Check in/out times

- ◆ Check in from 4pm
- ◆ Check out by 10am

Pets

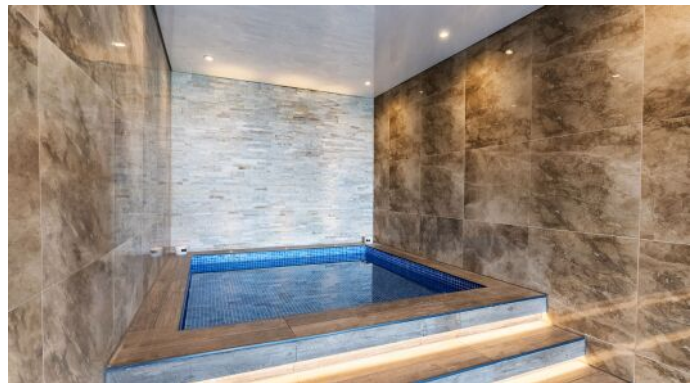
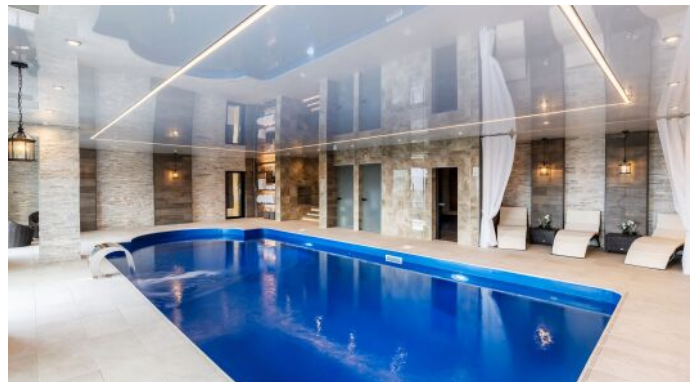
- ◆ Unfortunately the Manor is not suitable for pets

Disabled facilities

- ◆ Not suitable for those with very limited mobility
- ◆ The bedrooms and facilities are mostly all on the ground floor with only the odd step, please do enquire for further information

Stag & Hen groups

- ◆ Both Stag & Hen groups welcome





HOUSE PARTY SOLUTIONS

Clwydian Hill Manor

ACTIVITIES

- ◆ Entertainment Room - Entertainment scores highly at Clwydian Gate Manor, especially in the spectacular entertainment room which extends across the entire length of the second floor. On entering this splendid space, guests will immediately be bowled over by its stunning Bohemian crystal chandelier and magnificent floor to ceiling window, providing breath-taking panoramic views of the rolling hills and valleys. Within this fabulous fully air-conditioned room, with bar, fridge, lounge area with couches, massive 75 inch Smart TV, pool table, board games and table football, there's definitely something for everyone to enjoy.
- ◆ Magnificent Cave bar - Transport yourself back in time to our Medieval style sandstone Cave Bar & enjoy a relaxed drink or a more 'sparkling' evening in the ambience of this fun quirky space. With its glowing electric fireplace, oak wood bar, a fridge set into the stonework, table and chairs, chandelier, lanterns, and illuminated barrels, the Cave Bar is an atmosphere that will definitely take you into your own zone!
- ◆ Hot tub - Built out onto the hillside, a fabulous hot tub with surrounding glass balustrades, enjoys amazing panoramic views of the idyllic Clwyd valley and Denbighshire countryside.
- ◆ Heated swimming pool - The 46 sq. metre heated swimming pool is perfect for a serious daily swim or just a quick dip. If aqua aerobics is more your 'thing', or you simply want to take things up a beat or two, then our excellent Bluetooth surround sound system can certainly meet your requirements. A fast-flowing overhead fountain also adds to the fun and enjoyment of this stunning pool.
- ◆ Separate heated kiddie's pool - Family time is paramount to the wonderful holiday experience on offer at Clwydian Gate Manor. Whether enjoying adult time in the large heated swimming pool, or simply 'unwinding' on the nearby loungers, mums and dads can relax in the knowledge that their children are close by and having fun in the adjacent heated kiddies' pool.
- ◆ Sauna - For that ultimate 'feel good factor', why not take advantage of a few minutes in the Sauna room. The effects of this warm and relaxing atmosphere further enhance the enjoyment of our wonderful Spa facilities.
- ◆ Fire Pit - Why not sit under the stars and enjoy the warmth of our 6 metre diameter fire pit. With a song or two, a leisurely drink, the ability to connect with nature, and in stunning surroundings, this is a great way to enjoy an evening outdoors.
- ◆ Outdoor BBQ - If you fancy a bit of outdoor cooking, whether a succulent steak or a simple marshmallow, our masonry barbecue offers the perfect opportunity for both. Ideal for those long, warm summer evenings, or even the cooler winter nights, guests can dine out in the presence of good food, great company, and in a magnificent setting.
- ◆ If an outing to the beach is on your 'to do' list, Clwydian Gate Manor provides an ideal base for day trips to the seaside towns of Anglesey, Llandudno, Conwy, Portmeirion, Wrexham, as well as the popular beach resorts of Rhyl and Prestatyn.
- ◆ If you are looking for a more scenic day out, the incredible Snowdonia National Park is less than an hour away, and spectacular views of Mount Snowdon, the highest mountain in Wales, can be seen on a clear day.
- ◆ Even closer to home are the market towns of Llangollen, Denbigh, Mold, Betwys Y Coed, and most notably the nearby historic market town of Ruthin. Here, visitors can enjoy the historical sites of Ruthin Castle, the Old Gaol, Nantclwyd y Dre - the oldest dated timber framed town house in Wales, St Peters Square & Church, Ruthin Craft Centre, Dyffryn Clwyd FootGolf Centre, cafes, restaurants and pubs.
- ◆ With its winding streets, stunning architecture, enchanting artisan shops and good food, Ruthin has much to offer its visitors and is undoubtedly a great mix of the old and the new.
- ◆ There are lots of other activities and attractions for all ages in and around Ruthin, and indeed, throughout the whole of the North Wales surrounding area. Popular Loggerheads Country Park, rich in wildlife and heritage, is just a 15 minute drive from Ruthin, and nature trails, art trails, walking and cycling opportunities, zoos and wildlife parks, museums, children's indoor and outdoor activities, are easily accessible from Ruthin.



HOUSE PARTY SOLUTIONS

Clwydian Hill Manor

LOCATION

Set in its own 1.5 acres of private land, this beautifully designed countryside house delivers an elegant and ideal space in which to party or relax and unwind. Denbighshire & the Clwyd Range offer easy access to many interesting and varied places throughout North Wales. Its coastline to the north is home to the popular seaside resorts of Prestatyn and Rhyl, and with its rolling hills to the east, south and west, this Area of Outstanding Natural Beauty (AONB) will not disappoint.

A number of local pubs serving food are situated within a couple of miles from this stunning accommodation, and with Ruthin's local shops and stores, as well as a large Tesco supermarket, all your catering and general shopping requirements are within easy reach. There's a lively and varied nightlife, including bars, clubs and pubs, just a 25-30 minute drive away in the busy town of Wrexham.

Distance from

- ◆ London - 4 hours 10 minutes / 203 miles
- ◆ Manchester - 1 hour 10 minutes / 56 miles
- ◆ Liverpool - 45 minutes / 30 miles
- ◆ Birmingham - 1 hour 55 minutes / 90 miles
- ◆ Bristol - 3 hours 15 minutes / 170 miles
- ◆ Cardiff - 3 hours 30 minutes / 148 miles

Nearest airport

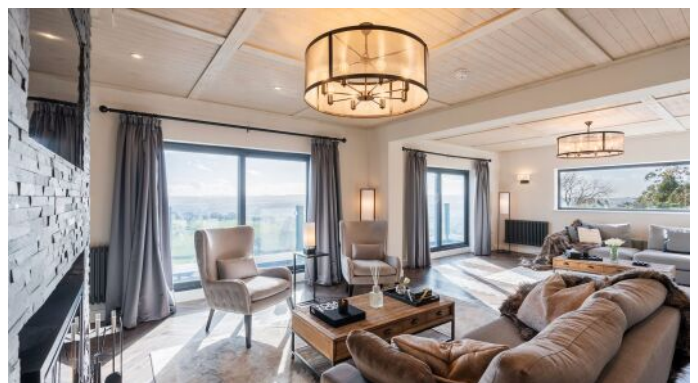
- ◆ Liverpool - 50 minutes / 40 miles
- ◆ Manchester - 55 minutes / 49 miles

Nearest train station

- ◆ Wrexham General Station - 25 miles / 13 miles
- ◆ Chester - 35 minutes / 23 miles
- ◆ The closest mainline rail stations to Ruthin are Wrexham and Chester, there are taxis and regular bus services serving both these stations.

Distance to Town/Village

- ◆ Approximately 1 hour's drive from Manchester and 45 minutes from Liverpool, the property is accessed directly off the A494 linking Mold town centre with the nearby bustling market town of Ruthin, approximately 1.8 miles from Clwydian Gate Manor.
- ◆ Mold and the historic city of Chester are approximately 7 miles and 20 miles away respectively, and the popular market town of Denbigh is only a 10 mile drive from the property.





HOUSE PARTY SOLUTIONS

Clwydian Hill Manor



PRICES

2024 / 2025

- ◆ All prices include the owners standard £695 cleaning fee
- ◆ A minimum 7 night stay applies during the peak summer holidays

Weekends

- ◆ 2 nights from: £6,894 - £7,642
- ◆ 3 nights from: £8,562 - £10,690
- ◆ 2 & 3 night stays not available during the peak summer holidays

Midweek

- ◆ 2 nights from: £4,135 - £6,895
- ◆ 3 nights from: £5,802 - £9,942
- ◆ 2 & 3 night stays not available during the peak summer holidays

Weekly

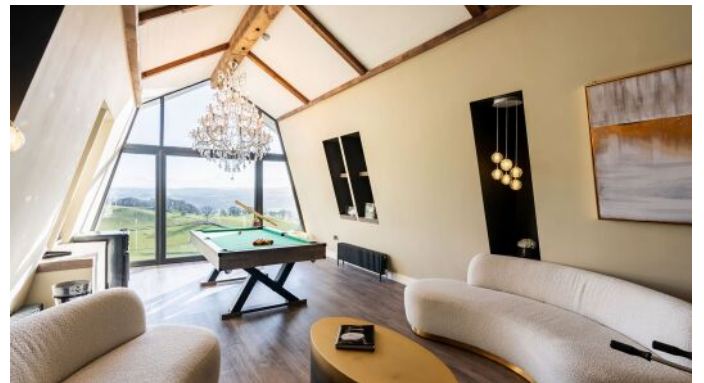
- ◆ From: £12,943 - £18,465

Christmas & New Year

- ◆ Christmas - Guide Price from: £19,832 for 6 nights
- ◆ New Year - Guide Price from: £16,410 for 5 nights
- ◆ Please enquire for an exact price based on length of stay - short breaks unavailable during the festive season

Booking terms

- ◆ 50% of the booking total is required to secure any dates
- ◆ The remaining 50% is then require no later than 8 weeks prior to arrival
- ◆ Refundable damages deposit of £1,000





HOUSE PARTY SOLUTIONS

Clwydian Hill Manor

