



HOUSE PARTY SOLUTIONS



Barford Beach House

Cornwall

SLEEPS 12-16



- ◆ Glorious quirky house overlooking a secluded cove with mesmerising sea views
- ◆ Sleeping 12-16 guests across 6 sumptuous en-suite bedrooms
- ◆ Hot tub, sauna, cinema room and secret bunker bar with pool table and arcade games
- ◆ Gorgeous easy to light wood burners around the house, and an AGA perfect for warming your hands and feet after those blustery coastal walks
- ◆ Fabulous beaches on your doorstep with a great family friendly pub with excellent food and brilliant sundowner gin bar for the adults within easy waling distance
- ◆ Large main lawn perfect for cricket & croquet, with lots of outdoor seating, BBQ and play boat for the kids



HOUSE PARTY SOLUTIONS

Barford Beach House



OVERVIEW

Nestled in the hills, with glorious views over a private cove, Barford Beach House is a quirky and unusual property beside the sea! With 6 en-suite bedrooms and beds for 12 (+4) people, the most incredible sea views and wide balconies, a wood fired hot tub and sauna, indoor cinema room, bunker bar and games room, plus a play boat and vast garden for the children. With secret doorways, magical features and quirky design touches throughout, this house is perfect for a family gathering or party weekend with a group of friends.

The coastal location of this property really provides a stunning backdrop, Wansong Mouth beach is directly in front of the house with both Black Rock & Widemouth Bay but a short walk over the cliffs. Continue this breath-taking coastal walk and you will arrive in Bude, where great shops, supermarkets, friendly pubs and fish & chip shops await, plus a peaceful canal winding down to Summerleaze beach with its partially man-made tidal swimming pool.



HOUSE PARTY SOLUTIONS

Barford Beach House

YOUR STAY

Number accommodated

- ◆ Sleeping 12 - 16 guests across 6 en-suite bedrooms

Bedroom & bathroom configuration

- ◆ Widemouth (the master suite) - enormous master bedroom suite with huge super king size bed, sitting area with its own wood burner, enormous, bespoke sliding glass windows out onto balcony with panoramic sea views of the magnificent Cornish coast, plus secret back balcony to get away from it all. Impressive white marble en-suite bathroom, with stunning double walk in shower and William Holland bath (with its own porthole view of the sea) separate loo & Bidet.
- ◆ Black Rock - luxurious super king (or twin) bed with another huge cabin bed on a high mezzanine platform (can be made up on request for an additional cost - NB: only 1m headroom) accessed by a tall metal ladder with its own porthole view of the sea (great for older children who are safe with heights). Full height sliding doors to balcony with expansive views, impressive industrial chic desk. En-suite shower room.
- ◆ Millook - the epitome of the 'Rough-luxe' aesthetic, this room has a bespoke scaffold four poster super king size bed with sheer curtains for that extra touch of decadence and a cosy en-suite shower room with sparkling mirror - would make anyone feel like they have woken up in a fairy tale. Full height sliding doors onto the balcony with amazing sea views.
- ◆ Crackington - the fairy tale theme continues in this room with an Alice in Wonderland bathroom with magical mirrored light shaft, hexagonal tiles, shower over bath and separate door to another sumptuous super king size bedroom, full height sliding doors to balcony and beyond to its amazing sea views.
- ◆ Summerleaze - Gorgeous seaside room on the ground floor is flooded with light. Both bedroom and bathroom have full height sliding doors onto the balcony with wonderful sea views beyond. The comfiest super king size bed imaginable with a large elegant marbled en-suite bathroom with William Holland slipper bath and separate shower.
- ◆ Wanson - this cosy room has a sumptuous super king size bed and additional built in wooden full-size two-tier bunk beds (can be made up on request for an additional cost). En-suite shower room with St. James shower. Super king size bed can also be made up as twins to make a cool dorm room for children.
- ◆ All bedrooms are supplied with Amphora Aromatics x Tregulland & Co complimentary Rosemary, Sage & Burdock bath products and 400 thread count Egyptian cotton linen

Dining capacity

- ◆ Persian oak dining table to seat 12 guests (dining for 16 can be arranged)
- ◆ Lots of outdoor chairs and seating for alfresco dining

Catering

- ◆ From celebration diners via sumptuous BBQs to delivered picnic hampers or homemade lasagne and salad for 16-we can bring it all to you!
- ◆ Please ask for more details, suggested menus and prices

Facilities

- ◆ Cinema room
- ◆ Sauna
- ◆ Bunker Bar
- ◆ Pool table
- ◆ Arcade games machine
- ◆ SONOS sound system
- ◆ Open fires
- ◆ Wood fired hot tub
- ◆ Croquet
- ◆ Play boat

Check in / out times

- ◆ Check in from 4pm
- ◆ Check out by 10am

Pets

- ◆ Up to 2 well behaved dogs welcome at a charge of £75 per dog

Disabled facilities

- ◆ None - sorry
- ◆ There are however 2 ground floor en-suite bedrooms although are both up either 2 or 4 steps, there are no grab handles or other disabled access concessions

Stag & Hen groups

- ◆ Not suitable for stag or hen parties



HOUSE PARTY SOLUTIONS

Barford Beach House

ACTIVITIES

On-site activities

- ◆ Wood fire hot tub with breathtaking sea views
- ◆ Sauna
- ◆ Large private gardens
- ◆ Cosy cinema room with drop down screen and 4HD projector. With Netflix and a selection of DVDs
- ◆ Bunker Bar, predominately for adults, when all the fun of the day is done the party can continue in the underground nightclub! With pool table and an arcade games machine (with over 700 retro games)
- ◆ Play boat
- ◆ Croquet

Local attractions

- ◆ Visit Bude, a picturesque Cornish town. Hire a canoe and row up the canal, walk along either Summerleaze or Crooklets Beech, visit the local shops and restaurants.
- ◆ Brilliant local cinema almost within walking distance (5 minute drive)
- ◆ Bude Sea Pool, the partially man-made tidal swimming pool - 10 minutes away
- ◆ Indoor swimming pool and ten pin bowling - 10 minutes away
- ◆ OA Surfclub - right next door can take you coasteering, rock climbing, abseiling and even teach you to surf! Call well in advance to book
- ◆ Visit the beautiful beaches on your doorstep, Widemouth Bay, Black Rock, Summerleaze, Crooklets, Sandmouth and many others
- ◆ Spend the afternoon or evening at either Widemouth Manor Pub or The Bay View Inn, both offering sublime views of Black Rock and Widemouth Bay
- ◆ Try some surfing, bodyboarding or paddle boarding lessons





HOUSE PARTY SOLUTIONS

Barford Beach House

LOCATION

Nestled in the hills close to one of Cornwall's most popular golden sandy beaches, Barford provides a private coastal escape in pure luxury with outstanding sea views! The picturesque coastal town of Bude is only a short drive away where you will find many restaurants and shops, a beautiful canal, 2 further beaches, breath-taking walks along the beach or above over the cliff tops, supermarkets and of course the traditional Cornish pasty or famous fresh fish & chips.

Distance from

- ◆ London - 4 hours 25 minutes / 238 miles
- ◆ Bristol - 2 hours 35 minutes / 143 miles
- ◆ Newquay - 1 hour / 40 miles
- ◆ Exeter - 1 hour 10 minutes / 62 miles
- ◆ Plymouth - 1 hour 10 minutes / 47 miles

Nearest airport

- ◆ Newquay - 50 minutes / 37 miles
- ◆ Exeter - 1 hour 30 minutes / 89 miles

Nearest train station

- ◆ Bobmin General - 28 minutes / 44 miles

Distance to town / village

- ◆ Bude - 9 minutes





HOUSE PARTY SOLUTIONS

Barford Beach House

FLOOR PLAN





HOUSE PARTY SOLUTIONS

Barford Beach House



PRICES

2024 / 2025

Prices are based on up to 12 guests staying. To have additional guests up to 4 max (16 guests in total), using the built in beds within the Black Rock and Wanson bedrooms there will be an additional fee per bed of £150 for short breaks or £225 for week-long stays

Weekend

Minimum 3 night stay, please enquire with your preferred dates for an accurate weekend price

- ◆ From £4,140 - low season
- ◆ From £5,808 - mid season
- ◆ Short breaks not available during the peak weeks

Midweek

- ◆ Monday - Friday bookings available and priced from £3,450

Weekly

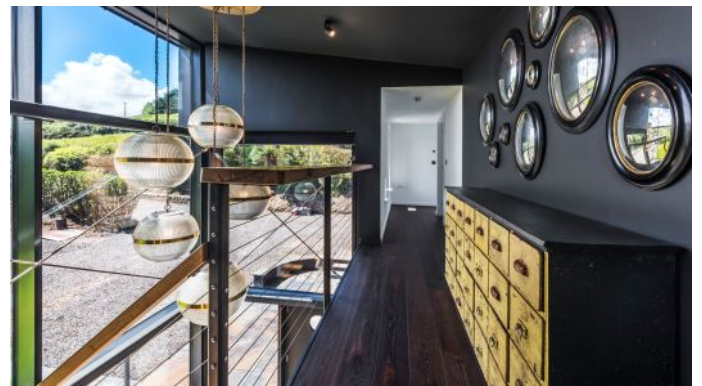
- ◆ 7 night prices ranging from £6,900 and up to £11,500
- ◆ Please enquire for confirmed pricing based on your chosen time of year

Christmas & New Year

- ◆ Christmas 2024 & 2025 - priced at £11,500 for 7 nights
- ◆ New Year 2024 & 2025 - priced at £11,500 for 7 nights

Booking terms

- ◆ A 33% deposit payment will be required to secure a booking
- ◆ The remaining balance is due 3 months prior to arrival alongside the damages deposit
- ◆ Damages deposit: £1,500





HOUSE PARTY SOLUTIONS

Barford Beach House

