



HOUSE PARTY SOLUTIONS



# The Rambling Rectory

Devon

SLEEPS 18 - 20



- ◆ Sleeps 18 adults with space for children
- ◆ Lovely solar-heated outdoor swimming pool
- ◆ Sauna
- ◆ Tennis court
- ◆ Gym
- ◆ Games room with snooker table and table tennis
- ◆ Spacious & cosy living areas
- ◆ Will consider wedding receptions in conjunction with their pub in the village, but has no wedding license
- ◆ Yoga room







HOUSE PARTY SOLUTIONS

## The Rambling Rectory



### OVERVIEW

The Rambling Rectory is a beautiful Victorian property situated on the edge of the quiet village of Chulmleigh in Devon. Originally built in 1826, the house was rebuilt in the late 1850's after a major fire, and was bought by the current owners in 1991. It finally reopened after major renovation in 1994 and boasts many original features, including a Grade II listed Victorian grotto nestled inside the walls, underneath the limestone balustrades. The house is cosy and traditional with a contemporary twist and includes culturally diverse art and sculptures collected by the present owners.

The house is set within beautiful grounds and has spectacular views over the Devonshire countryside. Facilities include a solar-heated outside pool, sauna, tennis court and games room making it a fantastic venue for a combined family holiday, weekend party, a wedding or a corporate retreat.

A note from the owners:

☒The Rambling Rectory is a spacious 19th Century country house, set in 5 acres of landscaped gardens and 20 acres of river meadows has been totally refurbished by the present owners and offers 12 spacious luxurious bedrooms all with en-suite bathrooms.

The Rectory is the perfect place for house parties, celebrations, family gatherings, small wedding receptions, or for those looking for a relaxing retreat.☒



HOUSE PARTY SOLUTIONS

## The Rambling Rectory

### YOUR STAY

#### <span>Number accommodated</span>

- ◆ 18 adults plus space for children

#### <span>Bedroom & bathroom configuration</span>

##### First Floor:

- ◆ Principal Room - King-size double
- ◆ Parisian Room - King-size double or twin beds
- ◆ Garden Room - Queen-size double
- ◆ Peacock Room - Small double room

##### Top Floor:

- ◆ Princess Room - Super-king double
- ◆ White Room - King-size double or twin beds
- ◆ Bunk room - Double or 2 children's single beds
- ◆ Cherry room - Queen-size double or twin beds

##### Courtyard:

- ◆ Studio - 1st floor super king. Ground floor kids single
- ◆ Cobbled Room - Four poster bed

#### <span>Number of bathrooms</span>

- ◆ 9 x en-suite bathrooms

#### <span>Dining capacity</span>

- ◆ Main dining room - Seats 14 - 18
- ◆ Kitchen - Seats 8
- ◆ Alfresco - Seats 8

#### <span>Catering</span>

- ◆ Self-catered although catering can be arranged - please contact us with your requirements.

#### <span>Facilities</span>

- ◆ Flat screen TVs and DVD players in most of the bedrooms
- ◆ Solar- heated salt water outdoor pool
- ◆ Sauna
- ◆ Hot tub
- ◆ Tennis court
- ◆ Gym
- ◆ Snooker room
- ◆ Wi-Fi

#### <span>Check in/out times</span>

- ◆ Check in at 5pm and check out at 10am

#### <span>Pets</span>

- ◆ Dogs are welcome - please contact us for further details.

#### <span>Disabled Facilities</span>

- ◆ The Rambling Rectory is an old house and disabled access cannot be guaranteed throughout however the studio offers a ground floor bedroom and shower room for disabled guests - please contact us with your exact requirements

#### <span>Weddings</span>

- ◆ The main dining room can seat 20 max for an intimate reception
- ◆ If the wedding is larger it can be hosted at The Rambling Rectory's lovely local pub in the village.
- ◆ Catering can be arranged - please contact us with your requirements.
- ◆ No wedding license.

#### <span>Stag and Hen parties</span>

- ◆ The house will accommodate stag and hen parties if they are well organised and booked in conjunction with their local pub The Red Lion Hotel where there is a late night music licence.

#### <span>Corporate facilities</span>

- ◆ The Rambling Rectory is ideal for meetings and brainstorming sessions.
- ◆ Please enquire for further information

#### <span>Other services offered</span>

At an additional cost the following can be arranged:

- ◆ Daily housekeeping
- ◆ Catering
- ◆ Fitness trainer
- ◆ Tennis coach
- ◆ Yoga teacher
- ◆ Pilates coach
- ◆ Masseur
- ◆ Babysitter



HOUSE PARTY SOLUTIONS

## The Rambling Rectory

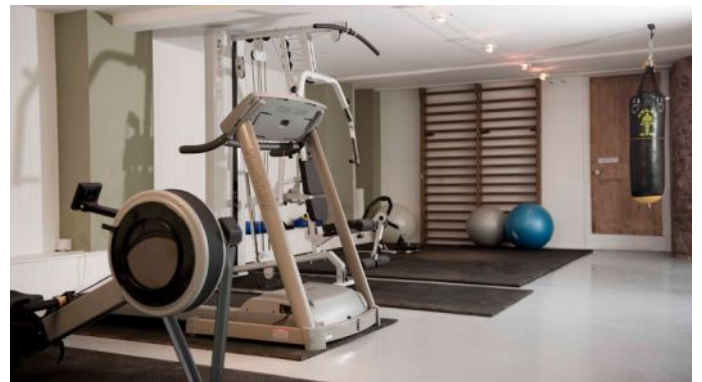
### ACTIVITIES

#### <span>Local Activities</span>

- ◆ Walking
- ◆ Cycling
- ◆ Golf
- ◆ Horse riding
- ◆ Fishing
- ◆ Clay pigeon shooting
- ◆ Game shooting

#### <span>Local Attractions</span>

- ◆ Visit the beautiful surfing beaches in North Devon- Croyde, Puttsborough, Saunton Sands and Woolacombe
- ◆ Go to the atmospheric Castle Drogo in Drewsteignton with spectacular views over Dartmoor
- ◆ Visit Exeter Cathedral, one of the finest examples of Gothic architecture
- ◆ Go see the picturesque gardens of Hartland Abbey near Bideford
- ◆ Visit Dartington Crystal in Great Torrington to see how glassware is created
- ◆ Go to Crealy adventure park in Exeter for a fun day of rides, indoor entertainment, outdoor adventures and lots of animals
- ◆ Visit Quince Honey Farm in South Molton
- ◆ Enjoy Rosemoor Gardens, an internationally renowned collection of gardens in North Devon







HOUSE PARTY SOLUTIONS

## The Rambling Rectory

### LOCATION

The Rambling Rectory is set in 5 acres of landscaped gardens and 20 acres of river meadows, in the unspoilt North Devon countryside, nestled between Exmoor and Dartmoor in the village of Chulmleigh.

#### <span>Distance from:</span>

- ◆ London - 3 hours
- ◆ Bristol - 1.5 hours
- ◆ Manchester - 4.5 hours
- ◆ Leeds - 5 hours

#### <span>Nearest airports:</span>

- ◆ Exeter Airport - 50 mins
- ◆ Bristol Airport - 1.5 hours

#### <span>Nearest railway stations:</span>

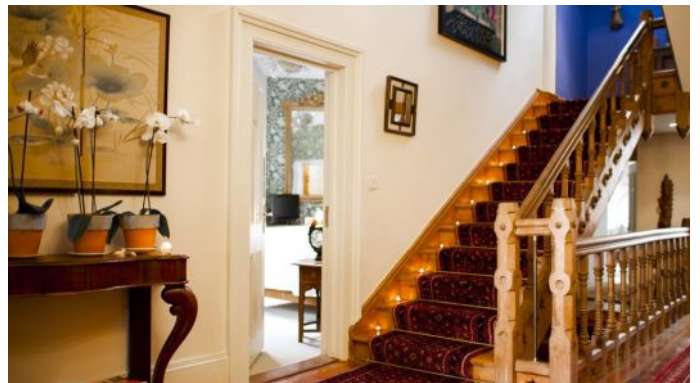
- ◆ Tiverton Parkway - 30 mins

#### <span>Distance to nearest town:</span>

- ◆ Chulmleigh - the house is in the centre of the town

#### <span>Distance to nearest city:</span>

- ◆ Exeter - 40 mins





HOUSE PARTY SOLUTIONS

## The Rambling Rectory



### PRICES

2023

#### **<span>Weekend, midweek & weekly bookings </span></span>**

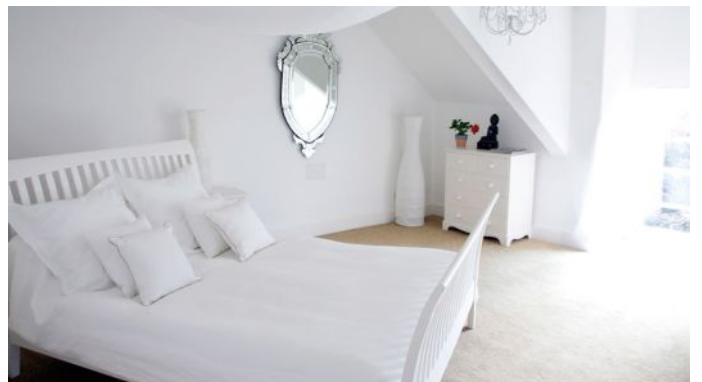
- ◆ Low Season - £7,000 for 3 nights, extra nights priced at £750 per night
- ◆ High Season - £8,000 for 3 nights, extra nights priced at £1,000 per night

#### **<span>Christmas & New Year</span>**

- ◆ Christmas - Priced from £10,000
- ◆ New Year - Priced from £10,000
- ◆ Please enquire for confirmed pricing

### Booking terms

- ◆ Deposit fee is confirmed via the owners and based on hire fee
- ◆ Remaining balance is confirmed via the owners and based on hire fee
- ◆ Damages deposit of £1,000 due prior to arrival







HOUSE PARTY SOLUTIONS

# The Rambling Rectory

